



Lightweight Solar Panel Expert

PRODUCT CATALOG

Jiangsu Pure Solar New Energy Co., Ltd

Lightweight Solar Panel Expert

CONTENTS

**01
COMPANY
INTRODUCTION**

**02
MAIN
PRODUCTS**

**03
APPLICATION
CASES**

**04
PATENTS
CERTIFICATIONS**

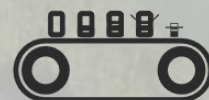
Lightweight Solar Panel Expert



10000
Square Meters



200+
Employees



5
Production Lines



50MW
Monthly Capacity

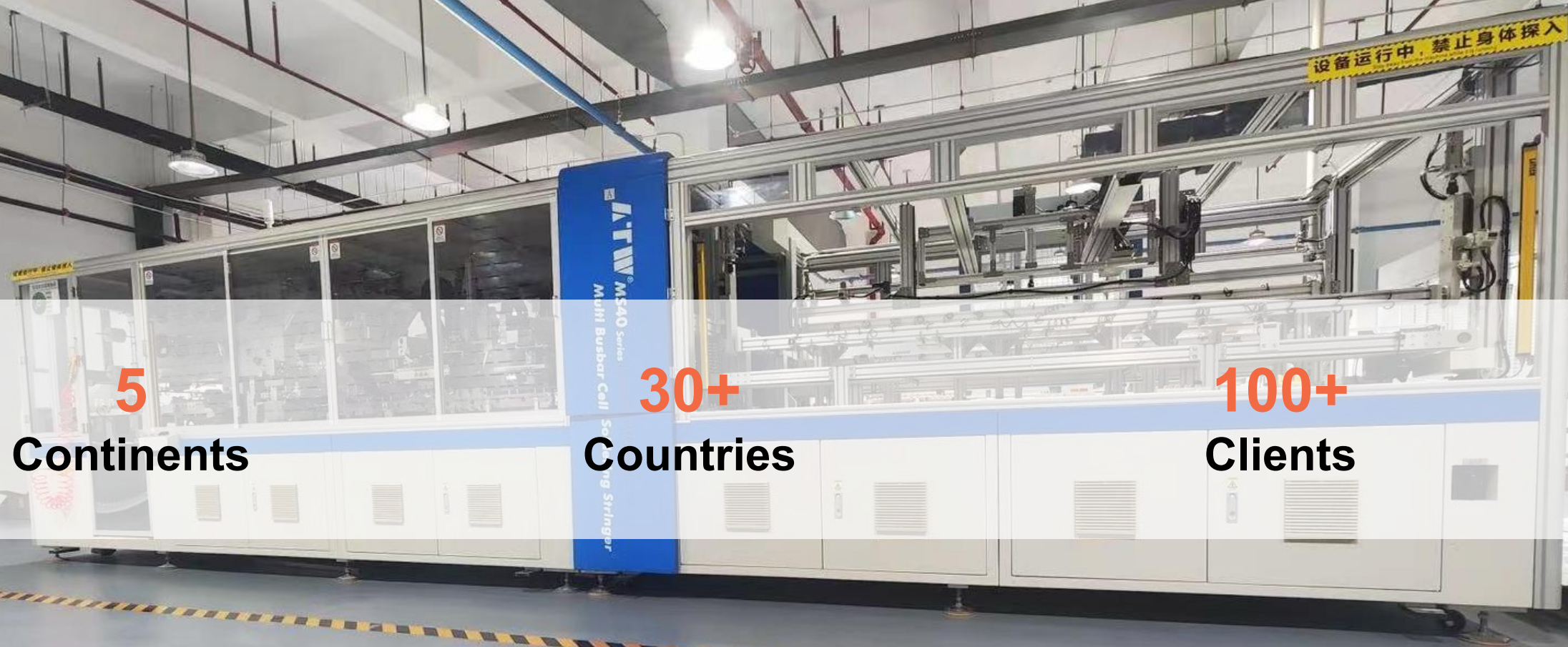
01

Fully Automatic Production Line

5
Continents

30+
Countries

100+
Clients



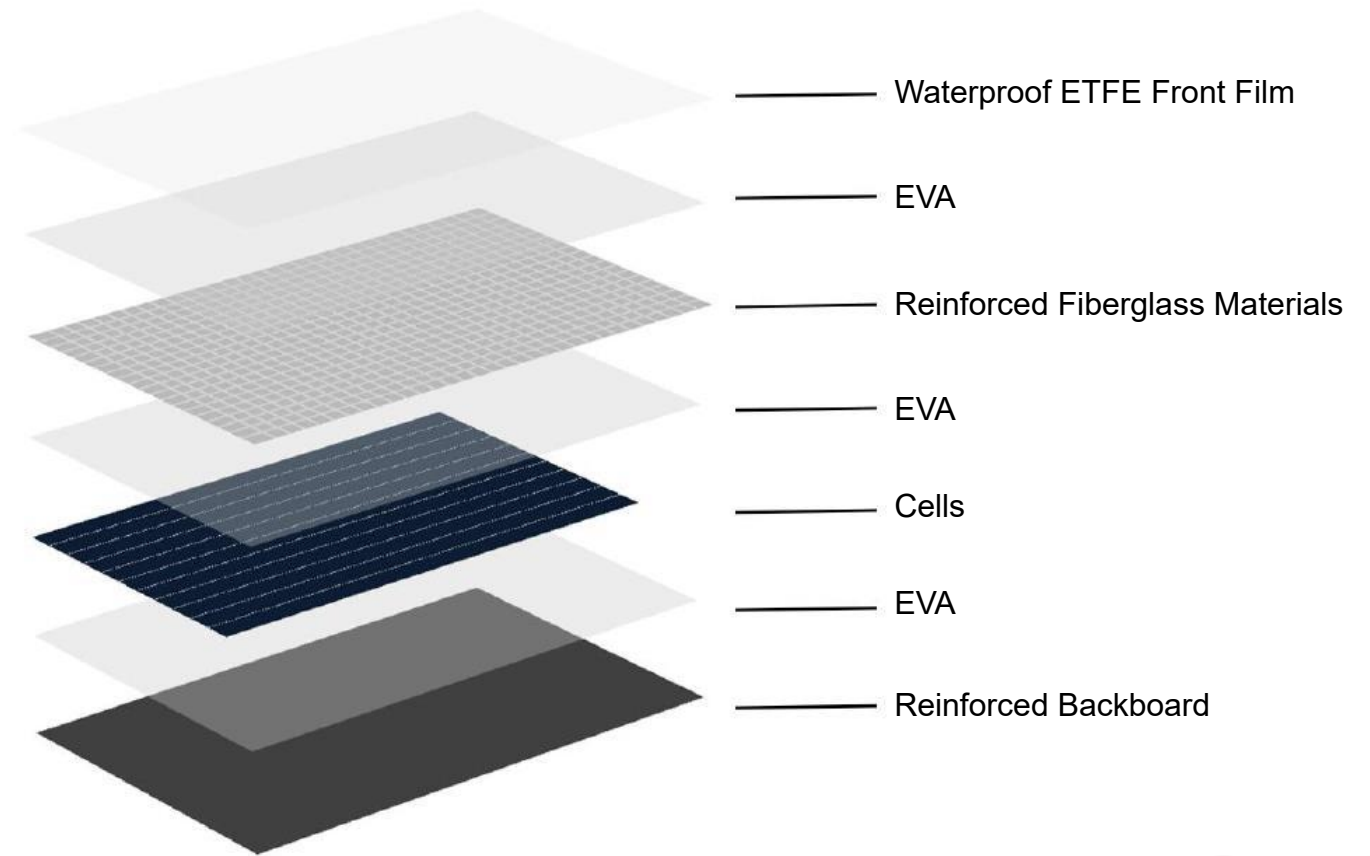
PRODUCT STRUCTURE

Independently Developed Waterproof ETFE Front Film

- Enhanced waterproofing capabilities
- Improved UV-blocking effectiveness
- Reinforced structural integrity

Individually Developed Reinforced Fiberglass Materials

- Increased light transmittance
- Enhanced durability of composite materials



Much thinner

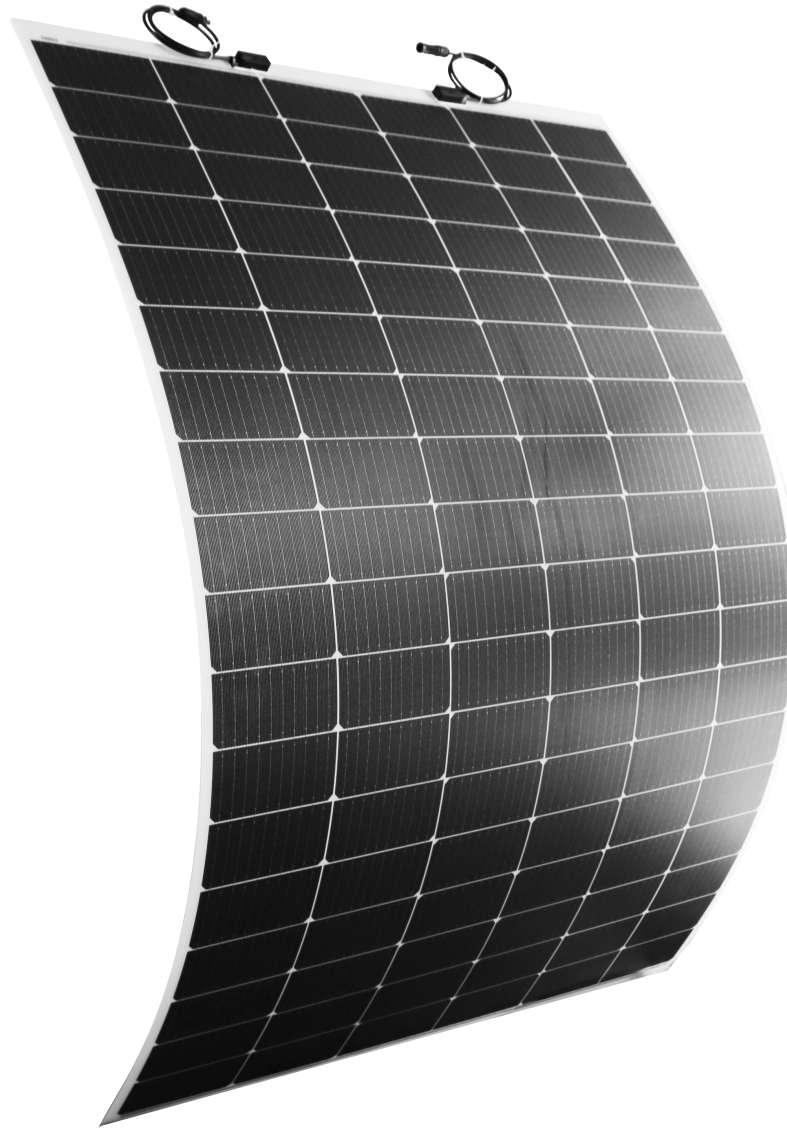
As thin as **18** mm

Much lighter

Weighing **3.5** kg/m²
only **30%** of traditional
modules

More flexible

Weighing only **30%**
of traditional modules



**Reducing the transportation
cost greatly**

Easy to install

**High reliability with TUV
and SUD certificates**

Wide range of application

FLEXIBLE SOLAR PANEL



Specification	Unit	PS-400-F8MC	PS-405-F8MC
Dimension(LXWXH)	mm	1726*1138*3	1726*1138*3
Max-Power(Pm)	W	400	405
Max-Power Voltage(Vm)	V	30.7	30.8
Max-Power Current(I _m)	A	13.03	13.16
Open-Circuit Voltage(V _{oc})	V	37.1	37.2
Short-Circuit Current(I _{sc})	A	20.21	20.46
Module Efficiency	%	20.21	20.46
Weight	kg	6.3	
Operating Temperature Range	°C	- 40~85	
Max-System Voltage	V	1500	
IP Rating	-	IP67	

BALCONY SOLAR PANEL



Specification	Unit	PS-205-F8MP	PS-210-F8MP
Dimension(LXWXH)	mm	1380*790*3	1380*790*3
Max-Power(Pm)	W	205	210
Max-Power Voltage(Vm)	V	15.9	16.2
Max-Power Current(I _m)	A	13	13.06
Open-Circuit Voltage(V _{oc})	V	19.4	19.4
Short-Circuit Current(I _{sc})	A	13.72	13.72
Module Efficiency	%	18.8	19.26
Weight	kg	3.3	
Operating Temperature Range	°C	- 40~85	
Max-System Voltage	V	600	
IP Rating	-	IP67	

LIGHTWEIGHT RV SOLAR PANEL



Specification	Unit	PS-100-F6ME	PS-200-F6ME
Dimension(LXWXH)	mm	1093*582*3	1605*748*3
Max-Power(Pm)	W	100	200
Max-Power Voltage(Vm)	V	19.4	20.1
Max-Power Current(I _m)	A	5.2	10.02
Open-Circuit Voltage(V _{oc})	V	23.5	23.9
Short-Circuit Current(I _{sc})	A	5.51	10.74
Module Efficiency	%	19.26	19.26
Weight	kg	2.2	4.2
Operating Temperature Range	°C	- 40~85	
Max-System Voltage	V	600	
IP Rating	-	IP67	

Building Integrated Photovoltaic



Advantages

Enhanced Appearance Options

Diverse and Customizable Aesthetics

Advanced Electricity Generation

Increased Power Output
Enhanced Efficiency in Various Conditions
Optimal Performance in Low Sunlight
Reduced Sensitivity to Sun Angle Variations

Enhanced Safety and Reliability

Top-Tier Flame Resistance (Level A Rating)
Robust Wind Load Resistance
Extended Operating Temperature Range

Elevated Environmental Contribution

Sustainable Energy Generation
Facilitating Green Power Integration
Empowering Every Structure as a Renewable Energy Source

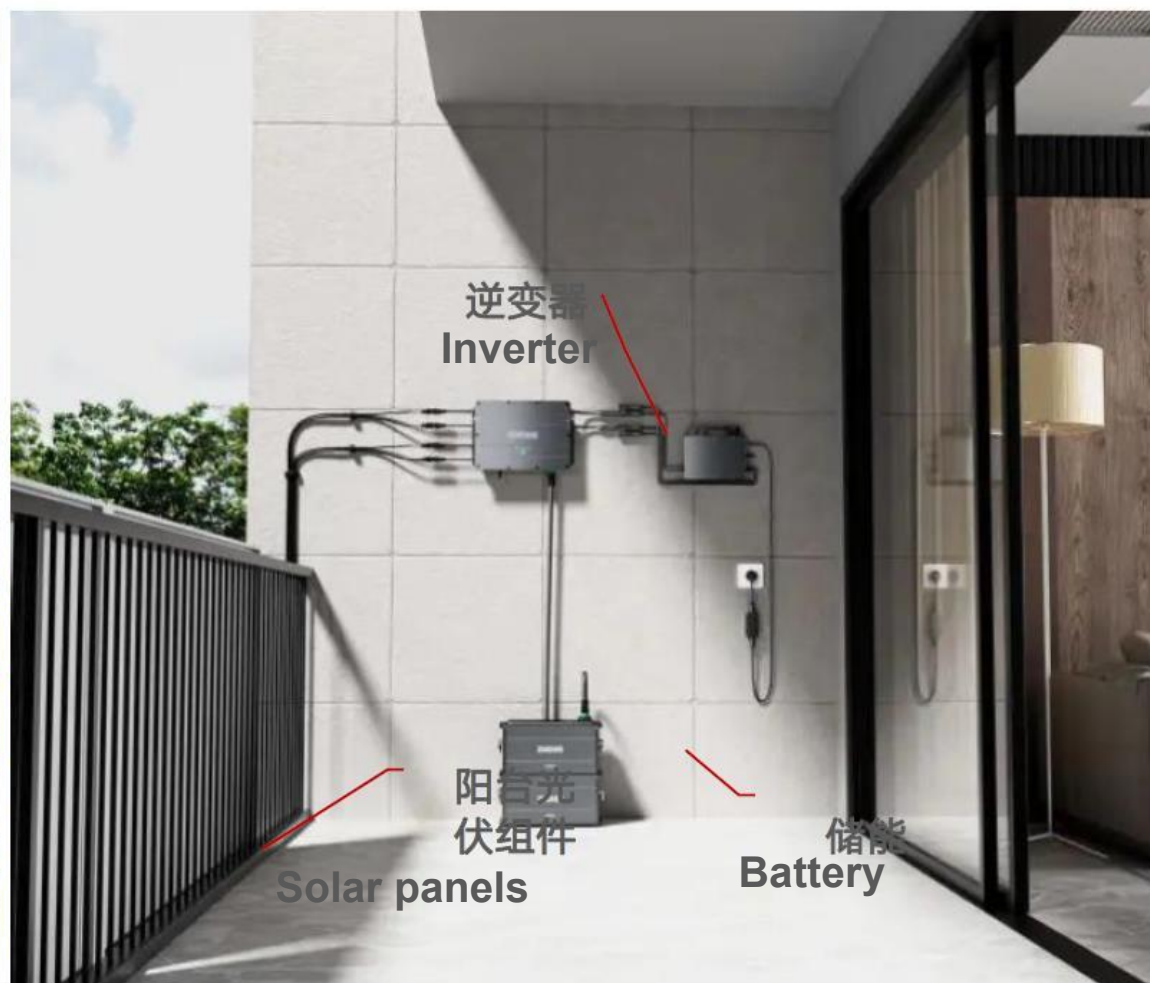
RV Solar Panel Application



RV Solar Panel Application



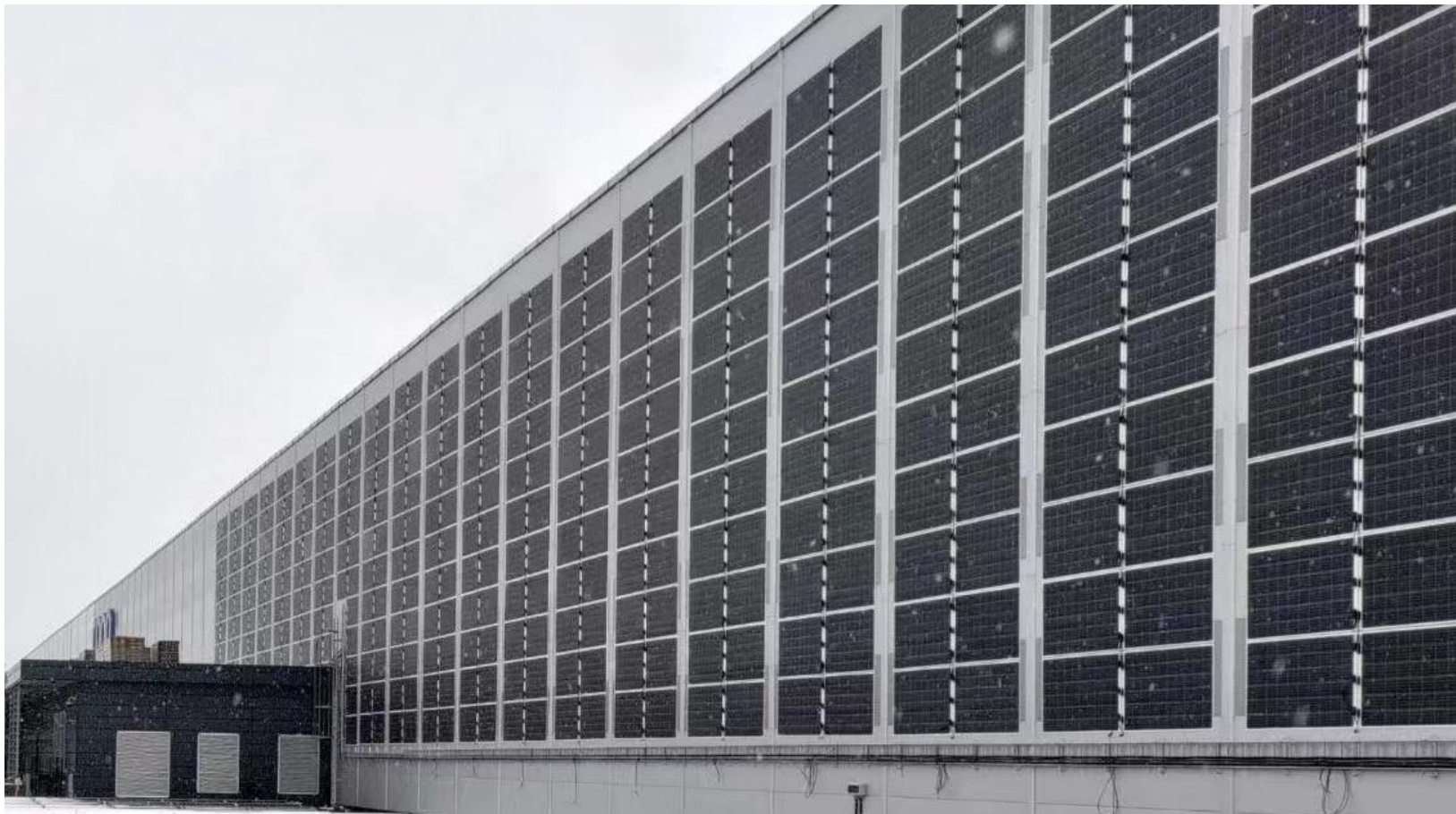
Balcony Solar Panel Application



Balcony Solar Panel Application



Flexible Solar Panel Application



Flexible Solar Panel Application



Flexible Solar Panel Application



Flexible Solar Panel Application

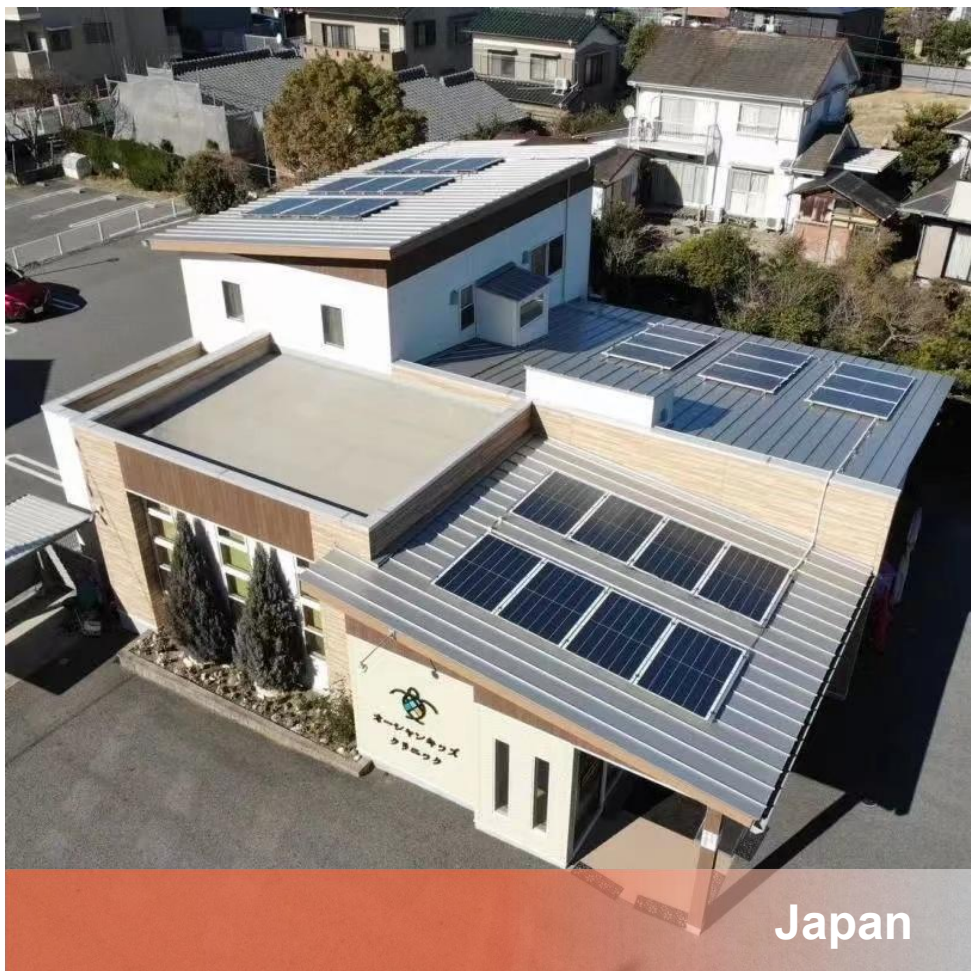


Flexible Solar Panel Application



APPLICATION CASES

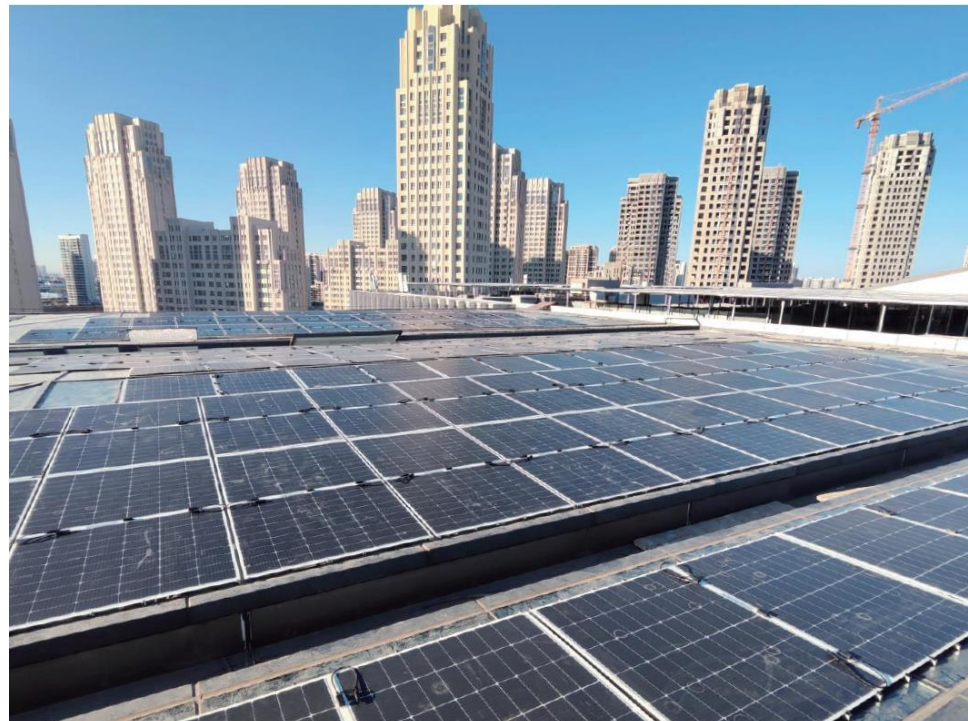
Flexible Solar Panel Application



Flexible Solar Panel Application

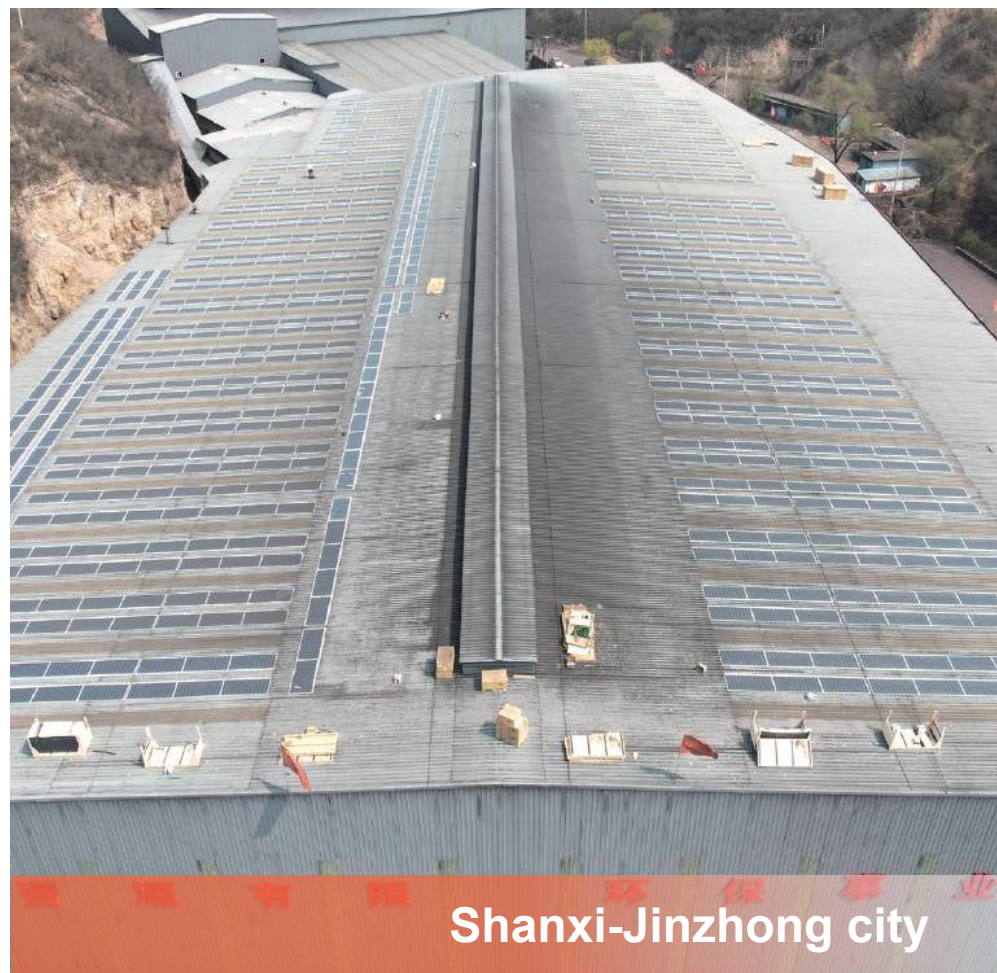


Shandong-Jining city



Tianjin city

Flexible Solar Panel Application



BIPV Application



ZERTIFIKAT ♦ CERTIFICATE ♦ 證書認證

CERTIFICATE

No. Z2 122597 0001 Rev. 00

Holder of Certificate: **Jiangsu Pure Solar New Energy Co.,Ltd**
No.141, Huxi Road, Yuqi Street, Huishan District
214183 Wuxi, Jiangsu
PEOPLE'S REPUBLIC OF CHINA

Certification Mark:



Product: **Crystalline Silicon Terrestrial Photovoltaic (PV) Modules**
Mono-Crystalline Silicon Photovoltaic Module

The product was tested on a voluntary basis and complies with the essential requirements. The certification mark shown above can be affixed on the product. It is not permitted to alter the certification mark in any way. In addition, the certification holder must not transfer the certificate to third parties. This certificate is valid until the listed date, unless it is cancelled earlier. All applicable requirements of the testing and certification regulations of TÜV SÜD Group have to be complied. For details see: www.tuvsud.com/ps-cert

Test report no.: 701262325001-00

Valid until: 2024-03-30

Date, 2023-09-18


(Zhulin Zhang)



ZERTIFIKAT ♦ CERTIFICATE ♦ 證書認證

CERTIFICATE

No. Z2 122597 0001 Rev. 00

Model(s):
PURES-xxx-F1MB, xxx=340 to 360 in steps of 5
PURES-xxx-F1MC, xxx=300 to 320 in steps of 5
PURES-xxx-F1MD, xxx=305 to 325 in steps of 5
PURES-xxx-F1ME, xxx=095 to 105 in steps of 5
PURES-xxx-F1MF, xxx=145 to 155 in steps of 5
PURES-xxx-F1MG, xxx=200 to 210 in steps of 5
PURES-xxx-F1MH, xxx=175 to 185 in steps of 5
PURES-xxx-F6MB, xxx=345 to 365 in steps of 5
PURES-xxx-F6MC, xxx=310 to 330 in steps of 5
PURES-xxx-F6MD, xxx=310 to 330 in steps of 5
PURES-xxx-F6ME, xxx=100 to 110 in steps of 5
PURES-xxx-F6MF, xxx=150 to 165 in steps of 5
PURES-xxx-F6MG, xxx=200 to 215 in steps of 5
PURES-xxx-F6MH, xxx=175 to 195 in steps of 5
PURES-xxx-F8MC, xxx=380 to 400 in steps of 5
PURES-xxx-F8MD, xxx=380 to 400 in steps of 5
PURES-xxx-F8ME, xxx=120 to 135 in steps of 5
PURES-xxx-F8MF, xxx=185 to 195 in steps of 5
PURES-xxx-F8MG, xxx=250 to 260 in steps of 5
PURES-xxx-F8MH, xxx=220 to 230 in steps of 5
xxx is standing for rated output power at STC

Parameters:

Test Laboratory: Changzhou HuaYang Inspection and Testing Technology Co., Ltd.
NO.8 Lanxiang Road,
Wujin Economic Development Zone,
Changzhou, Jiangsu, China
Construction: Framed with Junction box,
Cable and Connectors.
Safety Class: Class II
Maximum System Voltage: 1500 V DC or 1000V DC
Fire Safety Class: Class C according to UL790

Tested according to:
IEC 61215-1:2016
IEC 61215-1-1:2016
IEC 61215-2:2016
IEC 61730-1:2016
IEC 61730-2:2016
EN 61215-1:2016
EN 61215-1-1:2016
EN 61215-2:2017
EN IEC 61730-1:2018
EN IEC 61730-1:2018/AC:2018-06
EN IEC 61730-2:2018
EN IEC 61730-2:2018/AC:2018-06





Lightweight Solar Panel Expert

CONTACT US

Jiangsu Pure Solar New Energy Co., Ltd

Email: info@getpuresolar.com
sales@getpuresolar.com

Phone Number: +86 159 6180 6785

Website: www.getpuresolar.com

Office Address: No.141, Huxi Road, Yuqi
Street, Huishan District, Wuxi, Jiangsu, China

